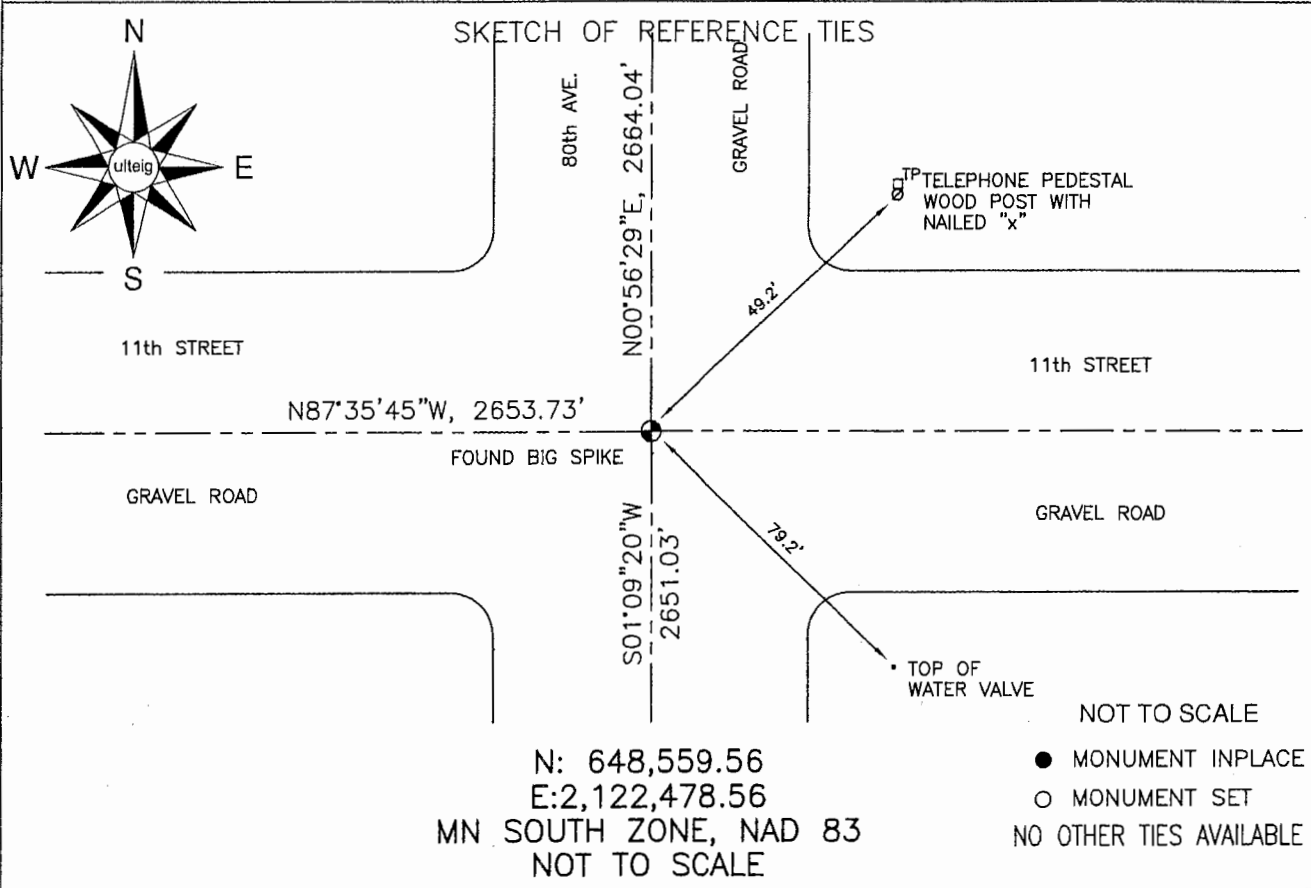


# CERTIFICATE OF LOCATION OF GOVERNMENT CORNER

NORTHEAST Corner of Section 32, Township 105 N, Range 42 W, 5th P.M.  
STATE OF MINNESOTA, County of MURRAY

At the corner location shown on the sketch:

- On 3/20/2006 found a BIG SPIKE IN THE C/L OF THE GRAVEL ROADS.  
DATE
- left monument as found,     lowered monument,     removed monument (explain)  
 On \_\_\_\_\_ placed a \_\_\_\_\_  
DATE



Statement of evidence relative to this corner location is on back of page.

I hereby certify that this document and the data contained herein was prepared by me or under my direct supervision.

Thomas V. Zeff    8/23/06  
Thomas V. Zeff    DATE

Registration No. 44563

- Land Surveyor,     Professional Engineer  
 County Surveyor,     County Engineer

OFFICE OF THE COUNTY RECORDER  
County of \_\_\_\_\_

I hereby certify that this document was filed in the Co. Recorders office at \_\_\_\_\_ .M. on the \_\_\_\_\_ day of SEP 28 2006 A.D., 20\_\_\_\_

County Recorder James V. Johnson  
By \_\_\_\_\_, Deputy

DOCUMENT NO. \_\_\_\_\_

STATEMENT OF EVIDENCE:

NORTHEAST CORNER, SECTION 32, T. 105 N., R. 42 W.,  
MURRAY COUNTY, MINNESOTA

- 1861 D.W. Wellman & S.S. Smoot, US. Deputy Surveyors,  
monumented corner.
- ? Date Murray Co., placed a stone on corner.  
Ties: SE-42.3' to tack in corner fence post;  
SW-40.4' to tack in corner fence post.
- ? Date Murray Co., located a concrete moument, 4" below grade.  
Ties: SE-47.1' to nail & cap on a corner post;  
NE-49.6' to nail & cap on a telephone pole;  
SW-47.6' to nail & cap on a telephone pole.
- 3/20/2006 Ulteig Engineers, Inc., Survey Crew, Brain Payne Party Chief,  
found big spike at the C/L intersection of the gravel roads.  
Ties: N-2664.04' to E 1/4 corner, Section 29;  
S-2651.03' to E 1/4 corner, Section 32;  
W-2653.73' to N 1/4 corner, Section 32;  
NE-49.2' to nailed "X" on wood post, for telephone pedestal;  
SE-79.2' to top of water valve.